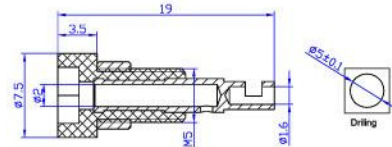


24.101.*



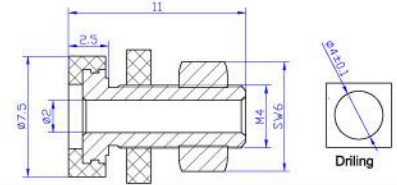
Material
 Insulator:PA
 Body:Brass
 Surface:Gold plated
Rated voltage/current
 30Vac-60Vdc/Max.10A



24.106.*



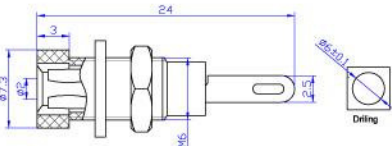
Material
 Insulator:ABS
 Body:Brass
 Surface:Nickel plated
Rated voltage/current
 30Vac-60Vdc/Max.10A



24.102.*



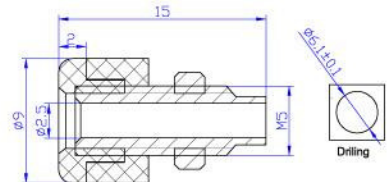
Material
 Insulator:ABS
 Body:Brass
 Surface:Nickel plated
Rated voltage/current
 30Vac-60Vdc/Max.6A



24.107.*



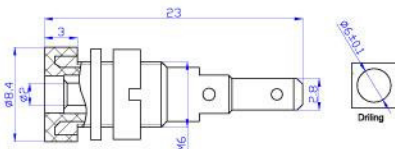
Material
 Insulator:ABS
 Body:Brass
 Surface:Nickel plated
Rated voltage/current
 30Vac-60Vdc/Max.10A



24.103.*



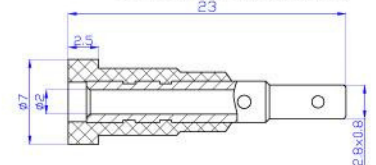
Material
 Insulator:PA
 Body:Brass
 Surface:Nickel plated
Rated voltage/current
 30Vac-60Vdc/Max.10A



24.110.*



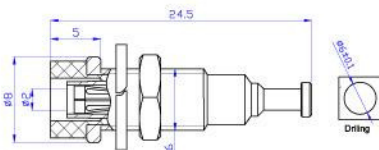
Material
 Insulator:PA
 Body:Brass
 Surface:Gold plated
Rated voltage/current
 30Vac-60Vdc/Max.10A



24.104.*



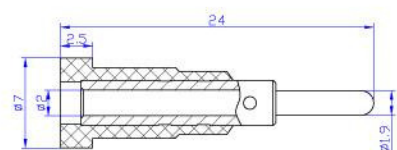
Material
 Insulator:PA
 Body:Brass
 Surface:Nickel plated
Rated voltage/current
 30Vac-60Vdc/Max.10A

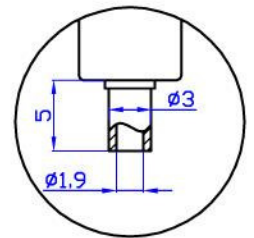
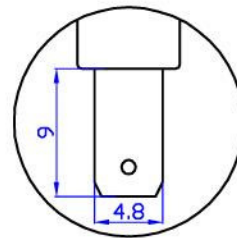
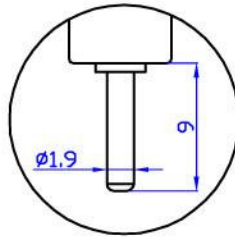
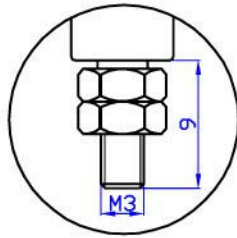
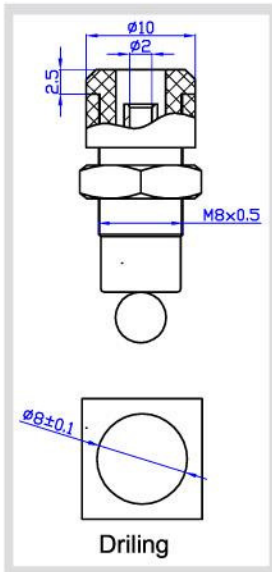


24.111.*



Material
 Insulator:PA
 Body:Brass
 Surface:Gold plated
Rated voltage/current
 30Vac-60Vdc/Max.10A





24.131.*

24.132.*

24.133.*

24.134.*

Model.	Material	Rated voltage/current
24.131.*	Insulator:PA	CATIII 600V/Max.10A
24.132.*	Body:Brass	
24.133.*	Surface:Nickel or	
24.134.*	Gold plated	



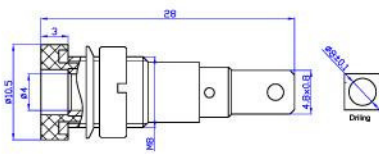
24.241.*



Material

Insulator:PA
Body:Brass
Surface:Nickel plated

Rated voltage/current
30Vac-60Vdc/Max.24A



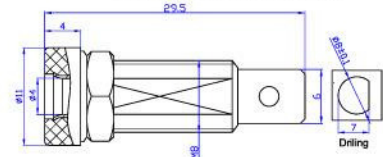
24.244.*



Material

Insulator:ABS
Body:Brass
Surface:Zinc plated

Rated voltage/current
30Vac-60Vdc/Max.24A



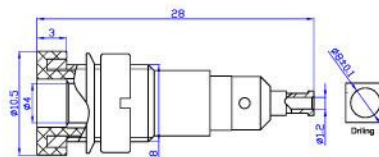
24.242.*



Material

Insulator:PA
Body:Brass
Surface:Nickel plated

Rated voltage/current
30Vac-60Vdc/Max.24A



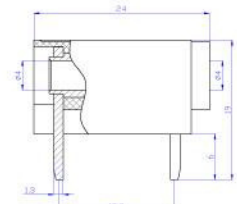
24.243.*

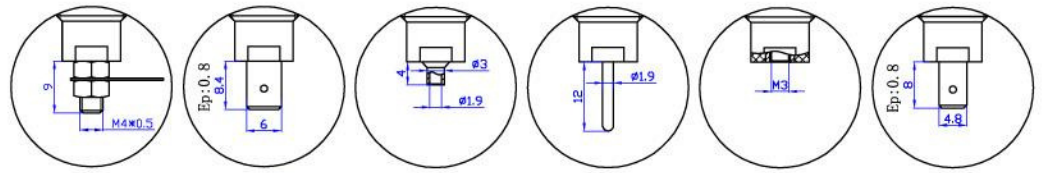
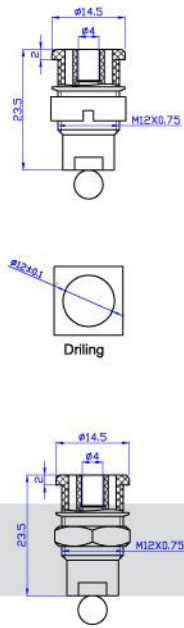


Material

Insulator:PA
Body:Brass
Surface:Silver plated

Rated voltage/current
30Vac-60Vdc/Max.24A

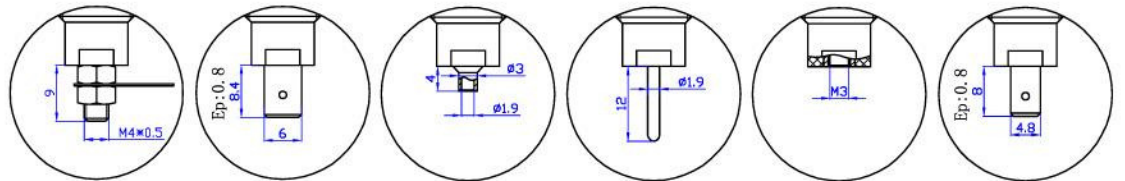
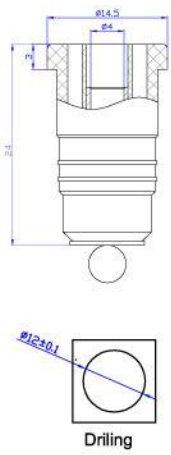




24.301.* 24.302.* 24.303.* 24.304.* 24.305.* 24.306.*

24.311.* 24.312.* 24.313.* 24.314.* 24.315.* 24.316.*

Model.		Material	Rated voltage/current
24.301.*	24.311.*	Insulator:PA Body:Brass Surface:Nickel plated	CATIII 1000V/Max.32A
24.302.*	24.312.*		
24.303.*	24.313.*		CATIII 1000V/Max.24A
24.304.*	24.314.*		CATIII 1000V/Max.32A
24.305.*	24.315.*		
24.306.*	24.316.*		

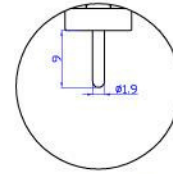
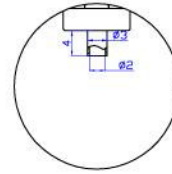
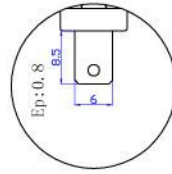
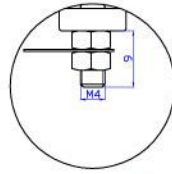
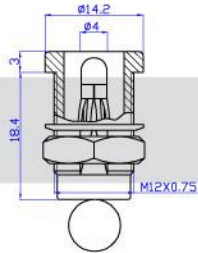
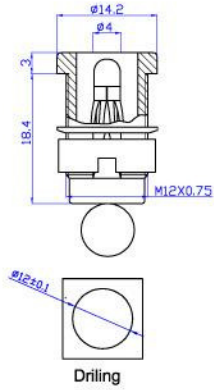


24.321.* 24.322.* 24.323.* 24.324.* 24.325.* 24.326.*

Model.	Material	Rated voltage/current
24.321.*	Insulator:PA Body:Brass Surface:Nickel plated	CATIII 1000V/Max.32A
24.322.*		
24.323.*		CATIII 1000V/Max.24A
24.324.*		CATIII 1000V/Max.32A
24.325.*		
24.326.*		



Panel Socket



24.381.*

24.382.*

24.383.*

24.384.*

24.391.*

24.392.*

24.393.*

24.394.*

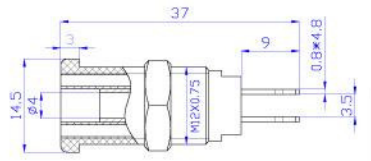
Model.		Material	Rated voltage/current
24.381.*	24.391.*	Insulator:PA Body:Brass Surface:Nickel plated	CATIII 1000V/Max.32A
24.382.*	24.392.*		CATIII 1000V/Max.24A
24.383.*	24.393.*		CATIII 1000V/Max.32A
24.384.*	24.394.*		



24.260.*



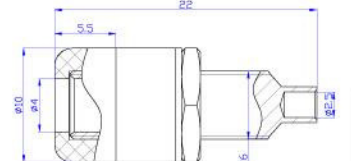
Material
Insulator:PA
Body:Brass
Surface:Nickel plated
Rated voltage/current
CATIII 1000V/Max.32A



24.247.*



Material
Insulator:ABS
Body:Brass
Surface:Nickel plated
Rated voltage/current
30Vac-60Vdc/Max.24A



24.246.*



Material
Insulator:ABS
Body:Brass
Surface:Nickel plated
Rated voltage/current
30Vac-60Vdc/Max.19A

