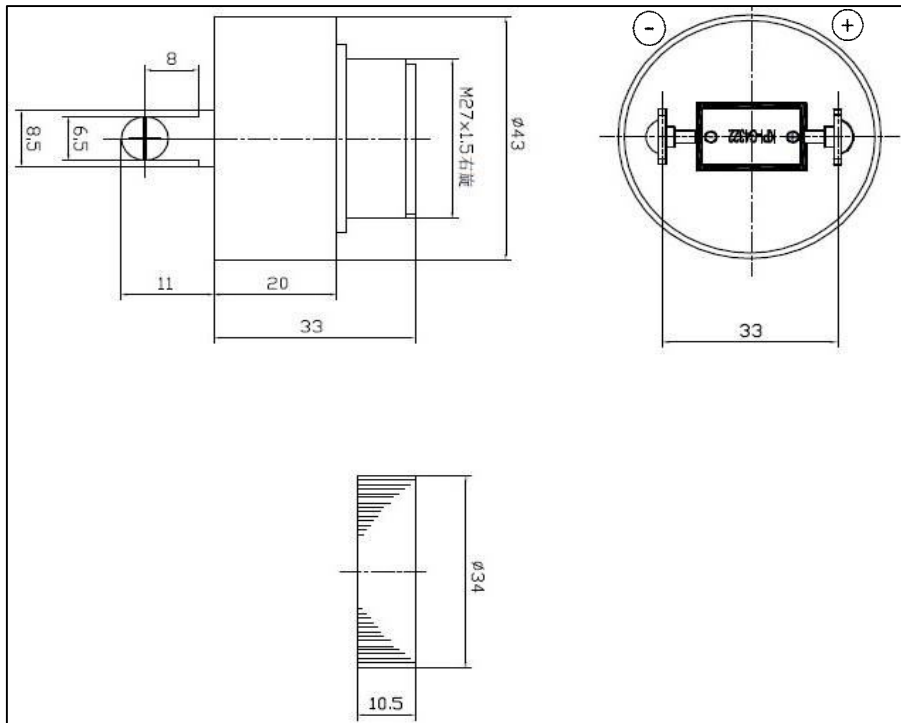


Technical datasheet: KPI-G4322-K6305

Specifications:

Operating Temperature	-20°C to +80°C
Storage Temperature	-30°C to +100°C
Rated Voltage	12VDC
Operating Voltage	6VDC to 28VDC
Max. Rated Current	20mA at 12VDC
Resonant Frequency	2.9kHz \pm 0.5kHz
Min SPL	80dB / 12VDC / 60cm
Weight	40g
Case Material/Color	PBT/Black
Tone Nature	Fast Pulse

Dimensions:



Frequency Response:

